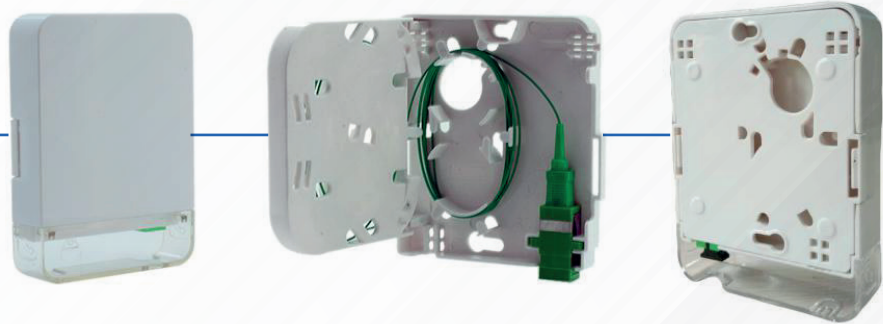


FTTX Indoor Terminal Box

YX-01S2-MS



Application

The YX-01S2-MS is a floor mounted or wall mounted termination box for end user, indoor use, capable to handle fiber fusion, mechanical splice, fiber cables and pigtails.

Specifications

Parameter	Value
Model	YX-01S2-MS
Outside Dimension (mm)	115*86*23
Material	ABS Plastic UL-94 V-0
Color	White
Splice capacity	1 fiber
Storage of fibers	G.657B3
Splice Method	Mechanical or fusion Splice
Adapter type and count	SC, 2SC
Input cable	3mm or figure 8 (2*3mm)

Features & Benefits

- Support termination, splicing and storage for fiber optic cable systems
- Suitable for one adapter, SC simplex or SC duplex configuration
- Compatible with G.657A1 and G.657B3
- Compact structure and perfect fiber management
- Engineered fiber routing protect bend radius through the unit to ensure signal integrity
- Applicable for wall-mounted and compatible with flush-mount outlet.



No.	Name	Qty.
1	Mechanical Splice	1 pcs
2	Expansion bolts for the outlet wallmounted	2 set
3	Nylon tie	2 pcs
4	Fusion splice protectors	2 pcs
5	SC/APC adapter	1 pcs
6	SC/APC G.657B3 900um pigtail	1 pcs

FTTX Indoor Terminal Box



Fiber Optic Mechanical Splice

WB925

Product description

Optic mechanical splice for indoor cable (tight buffer diameter =0.9mm or coating diameter=0.25mm)

ITEM	Technical Parameters
Applicable for	φ 0.25 mm & φ 0.90 mm Fiber
Optical fiber	125 μ m (652 & 657)
Tight buffer diameter (μ m)	250 μ m
Fiber mode	Single & multimode
Average Insert loss	\leq 0.15dB (1310nm & 1550nm)
Return loss	\leq -40dB
Fastening strength of naked fiber	$>$ 5 N
Fastening strength of naked fiber holder	$>$ 8 N
Using temperature	-40~+75°C
Repeatability (10 times)	IL \leq 0.2dB RL \leq 5dB

FTTX Indoor Terminal Box

Fiber Optic SC/APC Pigtail PetaFlex

G.657B3



Description

Yaax pigtails are compatible with all industry applications and fully compliant to industry standards including Telcordia GR-326. Pigtails are manufactured to rigorous quality standards to assure a high degree of precision. A fully automated polishing process ensures optimum geometries for radius of curvature, apex offset, and fiber undercut tolerances. Precise tolerance control results in reliable lowloss connections and rematings over the long term and under a wide range of operating conditions.

Parameter	Value
Model	YX-PL-PS9S2001
Insertion loss	£0.2dB
Return loss	>50dB
Ferrule	Zirconia
Fiber type	G.657B3
Connector type	SC/APC (Angled polish)
Cable dimension	900um

Fiber Optic SC/APC Adapter



Parameter	Value
Model	YX-ADT-PSS2
Insertion loss	£0.1dB
Return loss	>45dB
Ferrule	Zirconia

SCA Adapters Meets Latest TIA / EIA 604-3, JIS C5973, and IEC Specifications

Yaax Adapters Independently Tested In Accordance To Telcordia GR-326

Improved PPS Latch Design For Better Performance

Includes Dustcaps

Zirconia Ceramic Sleeve For Single-mode Use